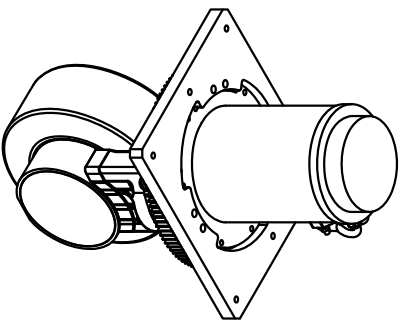
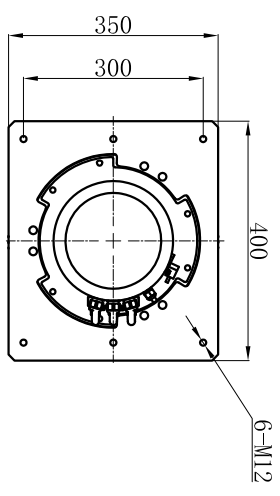
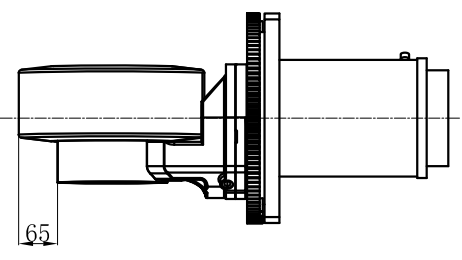
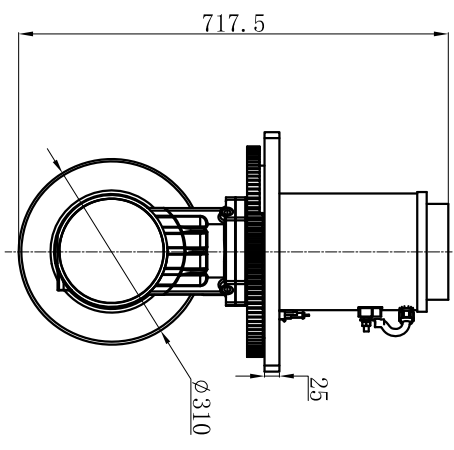


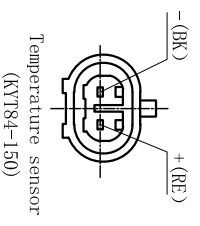
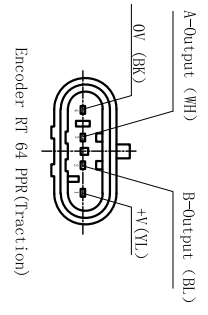
SERVO MOTOR IN WHEEL UNIT

CODE
PLT310P302A30-23-1VS-K



Traction motor data	
Type: Ac motor (TEC-S230P3000A25-24)	
Power (S2)	W 3000
Battery voltage	V 24
Speed	Rpm 2500
Current	A 137
Torque	Nm 11.46
Enclosure	IP 65

Traction Gear data	
Gear ratio	1 23
Nominal wheel torque	Nm 224
Max accel and braking torque	Nm 560
Max load on polyurethane wheel	Kg 2200
Brake torque	Nm 60
Lubrication	Grease



Brake wiring	
DFP	SIG
1	+24V
2	GND

CO	Shanghai Plutoools Automation Corporation Limited	
URL	https://www.plutools.com/	
Drawn:	CZL	Date: 2024.06.05
Check:	